

## 2021 Open Juried Show

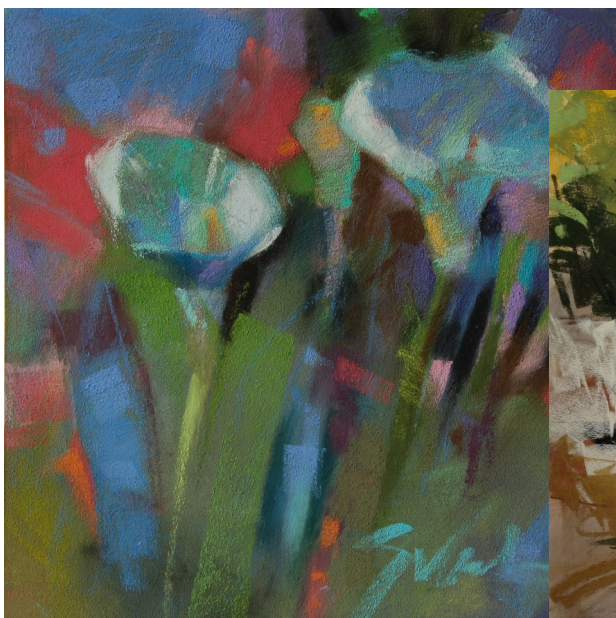
October 8 through November 27

The Peninsula Art League is pleased to announce its **19th Annual Open Juried Show**. This year the show will again be held at the beautiful Harbor History Museum [www.harborhistorymuseum.org](http://www.harborhistorymuseum.org) after last year's "pandemic pause". This impressive state-of-the-art structure on the waterfront in downtown Gig Harbor has a large dedicated gallery and elegant common space. Each year, national and international artists submit more than 300 entries to the show. This venue provides ample space to accept and show over 100 works of art. Prizes awarded to entrants in the 2019 Open Show, totaled nearly \$6,000. Awards include monetary and gift certificates. For more information on visiting and staying in Gig Harbor, check [www.gigharborguide.com](http://www.gigharborguide.com). In the event of another COVID closure, check our web site for details.



### Juror: Jennifer Evenhus:

Since 1996, Jen has established herself as a publishing artist and instructor. The knowledge she brings to the Open Juried Show as Judge is clearly seen in so many of her accomplishments. Some of her publications include: *Pratique des Arts* French magazine on Abstract Pastel Painting Oct./Nov. 2017, 2016 August Featured on Cover of *The Pastel Journal* Magazine with 10-Page article on florals, 2018 PSWC Magazine Summer Issue 'Art Business: A New Venture into An Unexpected Art Opportunity' (Wine Labels), Abstract Painting in Pastel in the July/Aug 1999 issue of *The Pastel Journal*, and 2019 *Pastel Journal* August Issue "Everything in Its Place" Declutter Your Studio, just to name a few from her long list. She is a well known Pastel instructor across the nation and beyond. Her more recent workshops include: Pastel Society of the West Coast, Virtual 3-Day Workshop, June 2021, Pastel Artists of Hawaii, Virtual 3-Day Workshop, April 2021, Pastel Society of Southeast Texas Virtual DEMO, February 2021, Appalachian Pastel Society, 90 minute DEMO & 3-Hour Virtual Workshop, September 2020, Pastel Society of Maine, Saco, September 2019 3-Day & 2-Day Pastel Workshop, Pacific Northwest Art School, August 2019 3-Day Pastel Workshop, South-eastern Pastel Society, June 2019 3-Day Pastel Workshop, and Austin Pastel Society, March 2019 2-Day Pastel Workshop. Jen has an incredible talent and energy, bringing light and insight to the shows she has been selected as Show Judge. [www.jenevenhus.com](http://www.jenevenhus.com).



## 2021 Calendar

Mar 10	OnlineJuriedShows.com opens for entries
Aug 1	Deadline to submit entries
Aug 20	Notification of accepted entries
Oct 2	Shipped artwork must arrive
Oct 2 10:00–2:00 pm	Hand-delivered artwork must arrive
Oct 7 10:00–2:00pm	Awards Selection
Oct 8 6:00–8:00 pm	Opening Reception
6:30 pm	Awards presentation
Oct 9	Show opens to the public (normal museum hours)
Nov <del>30</del> 2:00 pm new date due to Museum change: 27th	Show closes
Nov <del>30</del> 2:00–4:00 pm See line above.	Announcement of People's Choice Award & art pick-up.

## Eligibility

Artists must be 18 years or over.

Entries must be original works of art, entirely the work of the entrant and executed within the last two years.

All entries must be for sale. The Harbor History Museum, a non-profit community organization, charges a 40% commission.

Entries must not be prints or copies in part or whole of paintings or photographs by other artists.

Hand-pulled prints from intaglio, woodblock or serigraph are acceptable.

Reproductions are not eligible, except photography.

Works produced in workshops or under supervision are not eligible.

## Awards

Best of Show	\$1200
First Place 2D	\$ 500
First Place 3D	\$ 500
First Place Photography	\$ 500
1st Juror's Award	\$ 300
2nd Juror's Award	\$ 300
3rd Juror's Award	\$ 300
Honorable Mention	\$ 150
Honorable Mention	\$ 150

Plus many sponsored awards INCLUDING People's Choice

## Conditions

Entries include 2 D, 3 D (includes Jewelry so long as the jewelry is hand made, NOT beads strung) and Photography

Entry fees are non-refundable and include a maximum of three entries per artist.

Entries will be selected for the exhibition from digital images only.

Awards will be judged from the original art.

Including the frame, artwork must be a minimum of 12" on one side, height or width. Including the frame, artwork should not exceed 2200 total square inches in size. For Photography only, maximum size must not exceed 24"x24". Art must be sturdily framed and ready to hang including wire. May be gallery wrap with properly finished sides and wired to hang, (wire should be moderately taught, at about 1/3 from the top or higher with wire for larger pieces attached with "D" rings) gallery-wrapped canvas does not require framing. NO sawtooth hangers. NO wire should extend above the top of the piece.

Artists may not substitute another work for an accepted work, nor withdraw any accepted work prior to the end of the exhibition.

PAL reserves the right to refuse on arrival any artwork that does not meet the eligibility and conditions, does not match the submitted image, or is of unacceptable quality not discernible in the digital entry.

### How to enter

You can enter your images online at [www.OnlineJuriedShows.com](http://www.OnlineJuriedShows.com)

Help in photographing your work and properly sizing your images can be found at: [www.OnlineJuriedShows.com/help.aspx](http://www.OnlineJuriedShows.com/help.aspx).

**August 1** is the deadline to submit entries.

If you need help entering your images, please contact [info@onlinejuriedshows.com](mailto:info@onlinejuriedshows.com) or call (949) 287-8645.

Show catalog is generated directly from the information entered online. Accuracy is the artist's responsibility.

### Entry fee

PAL members: **\$50** for 1 to 3 pieces

Non-members: **\$60** for 1 to 3 pieces

There is an additional **\$40** fee per piece for handling shipped artwork. Artwork being shipped must have a pre paid shipping label for return included.

### Accepted works

Artists will be notified on **August 20** of acceptance.

Works may be hand-delivered or shipped. Instructions will be included with the acceptance letter.

There is an additional **\$40** fee per piece for handling shipped works. (noted above)

Entry into this show gives PAL permission to reproduce accepted artwork for promotional use, in the catalog, slide show, publicity and on our website.

While the utmost care is taken in handling artwork, neither PAL, nor its representatives, nor the Harbor History Museum will be responsible for damage or loss from any cause.

- Shipped art will be sent back within two weeks.
- Any hand delivered art not picked up by the deadline, or have prior arrangements made for pick-up will incur a **\$50** handling charge. Any art left after 1 month will be considered abandoned and disposed of.

For more information, email Carlene Salazar at [carlene.salazar@gmail.com](mailto:carlene.salazar@gmail.com) or call: (360) 978-4655.

---

## Peninsula Art League's 2021 Open Juried Show Workshop: October 9-11, 2021 Fee: \$395.00

### "Moments in Time" Pastel Painting Workshop

**Dates:** October 9-10-11, 2021

**Time:** 9:30 am to 4:30 pm daily

**Location:** Donna Trent's Studio Gig Harbor, WA

#### Workshop Description:

**Contact:** For application and information email [carlene.salazar@gmail.com](mailto:carlene.salazar@gmail.com) or call:(360) 978-4655. Applications can be found at <http://www.peninsulaartleague.com/MiscellaneousForms.html> and on Facebook. Mail application with deposit. Reservations will be in the same order application and checks arrive. Mail to: Peninsula Art League c/o Carlene Salazar, 267 Dluhosh Rd, Onalaska, WA 98570 Make Checks out to Peninsula Art League. For more information on visiting and staying in Gig Harbor, check [www.gigharborguide.com](http://www.gigharborguide.com) or look up hotels in Gig Harbor on line.

Jennifer "Jen" Evenhus discovers magic in her subjects with simplification and exaggeration, using her trademark style "the beauty of imperfection," revealing the soul of the subject with a unique, bold sense of color and design. Her work is contemporary with abstract leanings, creating in both pastel and oils.

Jen's "Moments in Time" Pastel Painting Workshop promises to be exciting, fun, and informative, as we capture vignettes of your life – your mom's favorite flower; a toy or doll from your childhood; a trophy or souvenir baseball; old tools from your grandpa's shop; a can of old paint brushes or tubes of oil paint; an old tractor or pickup that reminds you of your youth; a pair of outgrown baby shoes. We will bring memories to life in a magical work of art by infusing your image with emotion through color, value, texture, unusual lighting and unique viewpoints.

Jen is a popular national workshop instructor, giving "The Beauty of Imperfection" pastel workshops across the U.S. She has been published in magazines such as The Pastel Journal, American Artist, Pratique des Arts French Magazine, PSWC Magazine, IAPS Magazine The Globe and PSA Pastel-a-gram. Jen's award-winning work has been included in many National and International Juried Exhibits. She recently received Best of Show in the 2020 Northwest Pastel Society 34th Annual International Juried Exhibition and the Bill McEnroe Award in the 2021 NPS 35th Annual, both held at the Prestigious American Art Company Gallery in Tacoma, WA.

Jen is a Pastel Society of America Master Pastelist, International Association of Pastel Societies Master Circle Member, Northwest Pastel Society Distinguished Pastelist, and Pastel Society of the West Coast Signature Member. Jen is also a member of the American Impressionist Society. View recent work and learn more about Jen on her website [www.jenevenhus.com](http://www.jenevenhus.com).

**Contact:** For application and information email [carlene.salazar@gmail.com](mailto:carlene.salazar@gmail.com) or call:(360) 978-4655. Applications can be found at <http://www.peninsulaartleague.com/MiscellaneousForms.html> and on Facebook. Mail application with deposit. Reservations will be in the same order application and checks arrive. Mail to: Peninsula Art League c/o Carlene Salazar, 267 Dluhosh Rd, Onalaska, WA 98570 Make Checks out to Peninsula Art League. For more information on visiting and staying in Gig Harbor, check [www.gigharborguide.com](http://www.gigharborguide.com) or look up hotels in Gig Harbor on line.

All payments must be complete by day one of the workshop. All initial deposits need to be in by 1 October to reserve your spot.